

Biostatistics Core Facility

The Biostatistics Core Facility conducts collaborative biostatistical research and provide statistical collaboration and consulting supports for universities, industries and government agencies. The Biostatistics Core facilitates and enhances basic, clinical, and translational research in the International Medical University and provides high-priority assistance in developing grant proposals and publication. This assistance includes designing studies, developing analytic plans, and analyzing pilot data.



Biostatistics Core Facility

The Biostatistics Core Facility provides methodological and statistical support for basic, clinical, and translational research. The primary objective of the core is to ensure that studies are well designed, correctly analyzed, clearly presented, and correctly interpreted.

The portfolio of services available include:

- ❑ Statistics Clinic (FREE for IMU staff and research students)
- ❑ Statistical Consultation Services (fee-for-service basis)
- ❑ Contract Research
- ❑ Collaborative research
- ❑ Education in the areas of study design, data collection, computerization, and statistical methods

Our Consultants



Dr Cho Min Naing
Associate Professor
Clinical epidemiology
cho_naing@imu.edu.my



Dr Elaine Chan Wan Ling
Lecturer
Descriptive statistics &
laboratory statistics
elainechan@imu.edu.my



Dr Sangeetha Shyam
Lecturer
Biostatistics
sangeethashyam@imu.edu.my

Statistics Clinic

We offer a free walk-in statistical consulting service to researchers in IMU in support for the preparation of grant applications (does not include analysis of data for publication). Our idea is to keep the threshold to participation as low as possible: all researchers are invited to attend, regardless of their fields. We aim to provide anything from statistical advice to new methodology development. We will also be interested in discussing potential academic collaborations and possible joint projects with our clients.

How to participate?

Simply turn up at one of our drop-in sessions – prior booking is preferred. We will deal with all queries within the session. Prepare for the meeting by collecting your thoughts – send us the relevant documents 3 days before the discussion and prepare to give a 2 minute oral description of your scientific problem, in accessible language. Give (only) enough background to your problem to set the context of the question. Bring a laptop if you need a computer to explain the stage you have reached in your analysis, but be aware that we may not be expert in the particular research field you are involved.

What do we offer?

- Help our clients understand how to formulate their statistical problems in a more precise and meaningful way.
- Provide advice on different kinds of statistical models that can be used in different circumstances and being wary of common pitfalls.
- Point our clients to books, papers and software packages that might help them with their work.
- Provide advice on experimental design before data is collected (this is likely to result in a more successful route to addressing questions).
- Show clients how to apply appropriate statistical tools to highlight the most useful information from the data.
- Put our clients in contact with other researchers in IMU and beyond, who specialize in their particular type of problem.

Who can participate?

All researchers at IMU - research students and academic staff. Research students must inform their supervisors of their attendance.

What we expect in return?

We hope that sometimes our discussions might evolve into genuine scientific collaboration, but in many cases a small acknowledgement in your paper of our assistance (if there is any) will be fine.

When is the clinic?

The walk-in clinic will be typically held on Tuesday from 10:00am – 12:00pm except for public holiday. To confirm the exact time and location of the clinic, please contact:

Associate Professor Dr Cho Min Naing

Email: cho_naing@imu.edu.my

Tel: 03 - 2731 7216

Dr Elaine Chan Wan Ling

Email: elainechan@imu.edu.my

Tel: 03 - 2731 7718

Statistical Consultation Services and Contract Research

If more in-depth support is needed, a biostatistician can provide help with the writing of statistical components, including experimental design, sample size calculations, and choice of appropriate statistical methods. We encourage academic, government, non-profit, or commercial clients outside the University to utilize our services.

Consultancy Services

The provided services include expertise for the planning, conduct, analysis and interpretation and dissemination of research findings from clinical trials, epidemiologic and population based studies, experiments in basic research, and other types of studies:

- **Data Analysis.** Collaborating in the analysis of data for manuscript preparation, poster or oral presentations and grant submission.
- **Grant Application.** Providing statistical and methodological support for all grant applications.
- **Study Design.** Providing consultation during the design of a study, including the selection of the appropriate study design, primary endpoints, sample size and statistical model.
- **Providing statistical and methodological support** of all study protocols that are submitted for IRB review.

To encourage clients to seek our help with grant applications, we will offer a free initial one-hour consultation for any research project needing statistical assistance.

Consultation Fees

The hourly rate varies depending on the consultant, as shown below:

Consultant	Rate (IMU)	Rate (Academic/ Non-Profit)	Rate (Commercial)
Lecturer/Senior Lecturer	FREE	RM 80/hour	RM 120/hour
Associate Professor	FREE	RM 160/hour	RM 240/hour
Professor	FREE	RM 240/hour	RM 360/hour

Term of Services

The Biostatistics Core offers a variety of services. We offer a free initial one hour consultation for any research project needing statistical assistance. During this initial consultation, which will typically be a face-to-face meeting between the client(s) and consultants, we will provide general advice on experimental and/or survey design, discuss general procedures for analyzing data, and provide, where possible, interpretation of output from statistical software packages. Our goal in doing this is to improve the general statistical quality of research. This service is appropriate for any sort of research being done on campus, including projects related to students' Master's theses or PhD dissertations.

For some projects, this initial consultation will be the only assistance required. In other cases, if clients feel the need for more in-depth explanations or desire us to analyze data for them, we will provide these services for an agreed upon fee. In addition, we may also provide this service for off-campus researchers and commercial clients, as time permits.

The Biostatistics Core's services are not intended to help students answer homework questions or to provide tutoring. The Biostatistics Core does not write or format dissertation chapters. Additionally, the Biostatistics Core cannot provide data entry or data transcription services, nor do we provide independent research, though we are happy to offer advice on how these tasks can be accomplished.

Collaborative Research

We may also embark on full collaborative research by providing researchers support for the design, conduct, analyses, and generation of manuscripts for their research at no charge. Some of these projects may result in the publication of collaborative interdisciplinary research. In this case, it may be appropriate that co-authorship is granted to our consultant(s). Investigators wishing to discuss the possibility of collaborative research should contact the respective consultant(s).

Education in Statistical Methods

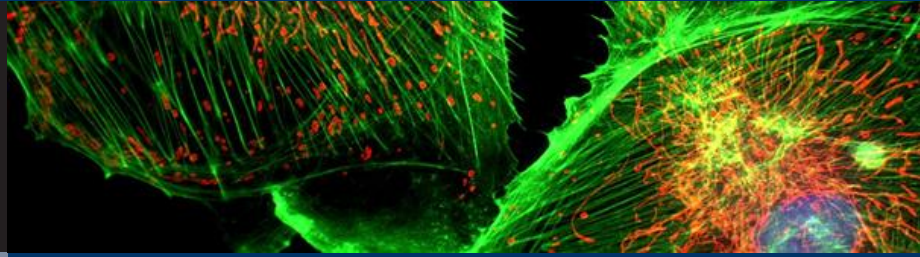
We can provide statistical and other quantitative training for students or researchers at university, industry, government agencies, and foundations, as needed.

Privacy and Confidentiality

All consultations will be subjected under the conditions of a Non-Disclosure Agreement (NDA). A collaboration agreement may be established for all contract and collaborative research. The investigator can publish all data under the terms of the NDA if it is under a fee-for-service agreement.

Institute for Research, Development & Innovation

Biostatistics Core Facility



Contact Information

International Medical University
No.126, Jalan Jalil Perkasa 19,
Bukit Jalil, 57000 Kuala Lumpur,
Malaysia

Tel : 03-2731 7044

Fax : 03-8656 7299

Email: IRDI@imu.edu.my

Terms and Conditions

The services provided by the IRDI Biostatistics Core Facility are not intended to help students answer homework questions or to provide tutoring. The Biostatistics Core does not write or format dissertation chapters. Additionally, the Biostatistics Core cannot provide data entry or data transcription services

