

# WHOLE-SLIDE SCANNER SERVICE

## DIGITALISE YOUR TISSUE SLIDES

### ABOUT THE SCANNER

The PANNORAMIC Midi II (3D HISTECH) supports the best Carl Zeiss objectives, achieving up to 43x or 86x magnification and 0.087  $\mu\text{m}$ /pixel resolution.

### ADVANTAGES OF WHOLE SLIDE IMAGING

- Faster diagnosis and saves time
- Flexible and accurate
- Efficient way to present teaching slides
- Excellent way to archive and share slides
- Image can be stored as long as it is required without degradation of image quality
- Electronic archived image will allow modest and rapid access

### PRICING

Sample Size	Single Layer	Multilayer
Below 50 Samples	RM75	RM80
51-200 Samples	RM65	RM70
201 – 500 Samples	RM60	RM65
Above 500 Samples	RM55	RM60
IMU (Staffs & Students)	RM28	RM30

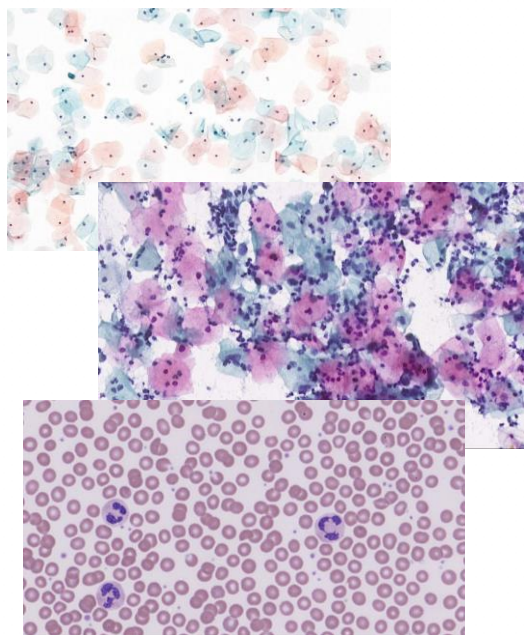


Image analysis of whole-slide imaging



📍 IRDI Research Laboratory, 1<sup>st</sup> Floor, International Medical University, Bukit Jalil

📞 Pn. Soliha (03-27317034) and Ms Siew Lye Kuan (03-27317461)

✉️ [analysis\\_rlab@imu.edu.my](mailto:analysis_rlab@imu.edu.my)